

# Sustainability Framework

At Singapore EXPO, we bring a fresh perspective to hosting eco-friendly events as Asia's leading sustainable event venue partner-of-choice.

SINGAPORE  
**EXPO**

Playground of Possibilities





# Why Sustainability?

**As a leader in the MICE industry, we recognise that large-scale events are major consumers of energy, water and resources, not to mention major producers of waste.**

This is why we are committed to creating positive change through our work. Beyond providing spaces and platforms to connect global partners, businesses, and consumers, we aim to be a positive force within the MICE ecosystem by executing events sustainably. As Asia's most sustainable MICE venue powered by renewable energy, we have reimagined what it means to host truly green events.

At Singapore EXPO, we bring a fresh perspective to hosting eco-friendly events as Asia's leading sustainable event venue partner-of-choice, integrating eco-friendly practices in every aspect of our building operations.

From our expansive array of solar panels and smart buildings to our zero-waste solutions and responsible food practices, our initiatives are aligned with Singapore's Green Plan 2030 and the United Nations Sustainable Development Goals (SDGs) to set the gold standard for sustainability within the industry. We are also a proud participant of the United Nations Global Compact.

By choosing our venue, you're not just selecting a space – you're making a statement about your commitment to environmental stewardship and positively impacting communities. Together, we can redefine the future, where every event contributes to a cleaner, greener planet.





## SUSTAINABILITY FRAMEWORK

# Asia's Most Sustainable MICE Venue

Powered by Renewable Energy

To drive sustainability, we have a comprehensive framework that focuses on four key pillars:

### GREEN ENERGY ONSITE

Aligned with SDGs:



### SMART & SUSTAINABLE BUILDINGS

Aligned with SDGs:



### ZERO WASTE SOLUTION

Aligned with SDGs:



### RESPONSIBLE FOOD PRACTICES

Aligned with SDGs:



HERE'S HOW WE DO IT AT SINGAPORE EXPO

# Green Energy Onsite

**Our solar panel system, approximately the size of eight football fields, generates almost all the energy needed to power our buildings and electric vehicle charging stations. Any remaining energy consumption will be sourced from carbon-neutral green electricity.**

## THE NIFTY DETAILS

- 16,508 solar panels with a capacity of 9.7MWp installed on our roof since December 2023
- Generates 12GWh annually
- Avoids the equivalent of 5,000 metric tons of carbon dioxide yearly



### WHAT THIS MEANS FOR YOU



Our team is able to collect and compare your event's electricity usage with our renewable energy data to help you determine your event's energy usage. You may request this carbon footprint report\* from your sales manager.

*\*Available for B2B events*





HERE'S HOW WE DO IT AT SINGAPORE EXPO

# Smart & Sustainable Buildings

To reduce our overall water and electricity consumption, our buildings are fitted with smart technologies such as smart sensors that automatically adjust light and room temperature based on traffic flow and amount of natural light.

Our buildings are also designed to reduce our reliance on artificial lighting, with strategically placed skylights and large windows for ample natural light to flow into our spaces.

## THE NIFTY DETAILS

- BCA Green Mark Platinum Super Low Energy Certified
- SACEOS MICE Sustainability Certification – Platinum
- Highly efficient and scalable HVAC cooling plants
- Lighting control systems to schedule and manage lighting across our buildings
- Motion sensors in restrooms
- Replacement of diesel-run mobile elevated work platforms and forklifts with electric alternatives
- SG Green Label products for cleaning consumables
- Digitisation of work processes



### WHAT THIS MEANS FOR YOU

Your event will have a lower carbon footprint without compromising quality or comfort.



HERE'S HOW WE DO IT AT SINGAPORE EXPO

# Zero Waste Solution

**We have a robust recycling process that focuses on reusing, reducing and recycling waste at every opportunity.**

**Our powerful food digester can process 365 tonnes of food waste annually, transforming waste into greywater safe for release into the public sewage system.**

**As part of our conservation efforts and reducing reliance on potable water, air-conditioning condensate and rainwater go through a water harvesting system before they are used for landscape irrigation and jet washing of common areas.**

**And for our visitors, from ample water dispensers to clear waste-sorting guidelines on our recycling bins, we make zero-waste easy for everyone.**

## THE NIFTY DETAILS

- Water harvesting system to repurpose air-conditioning condensate and rainwater for landscape irrigation and jet washing
- User-friendly labels on recycling bins across common areas to aid waste separation
- Onsite waste separation and sorting centre to ensure non-contamination of waste streams
- Food digester reduces carbon emissions by minimising the need for transportation to incinerators
- Onsite weighing of waste produced
- Digital screens instead of physical advertising and marketing materials to reduce waste
- Water dispensers in common areas to encourage visitors to use their own reusable water bottles



## WHAT THIS MEANS FOR YOU

We can collect, weigh and transfer your waste to the food digester, and provide you with a report on the amount of waste digested after the event.



HERE'S HOW WE DO IT AT SINGAPORE EXPO

# Responsible Food Practices

**We believe that sustainability starts right from the food source to the table and beyond. This is why we work with catering partners who advocate seasonal and locally harvested produce to reduce food miles and carbon emissions. We also grow our own herbs onsite to supplement our kitchens with the freshest ingredients possible.**

## THE NIFTY DETAILS

- Farm-to-table practices via our onsite herb gardens
- Close partnerships with F&B partners to adopt plant-based food and use local products
- Eco-friendly cutlery and packaging for our F&B products



### WHAT THIS MEANS FOR YOU

Sustainable dining is now easily accessible through our supply chain.





# Your Guide to Sustainable Events at Singapore EXPO



## ZERO WASTE SOLUTIONS

- User-friendly labels on recycling bins across common areas to aid waste separation
- Onsite waste separation and sorting centre to ensure non-contamination of waste streams
- Onsite weighing of waste produced
- Food digester reduces carbon emissions by minimising the need for transportation to incinerators
- Digital screens instead of physical advertising and marketing materials to reduce waste
- Water dispensers in common areas to encourage visitors to use their own reusable water bottles
- Water harvesting system to repurpose air-conditioning condensate and rainwater for landscape irrigation and jet washing

### WHAT THIS MEANS FOR YOU

We can collect, weigh and transfer your waste to the food digester, and provide you with a report on the amount of waste digested after the event.

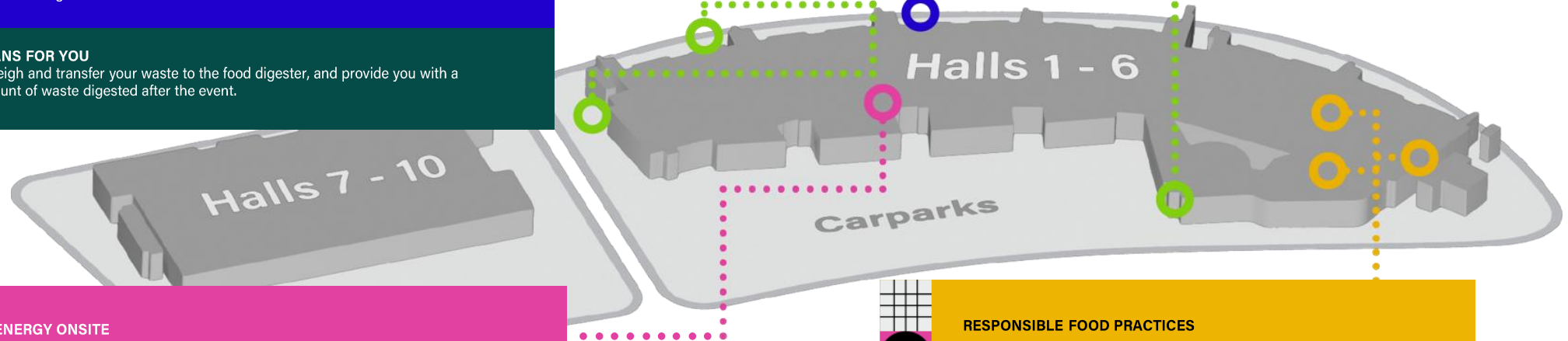


## SMART & SUSTAINABLE BUILDINGS

- BCA Green Mark Platinum Super Low Energy Certified
- SACEOS MICE Sustainability Certification – Platinum
- Highly efficient and scalable HVAC cooling plants
- Lighting control systems to schedule and manage lighting across our buildings
- Motion sensors in restrooms
- Replacement of diesel-run mobile elevated work platforms and forklifts with electric alternatives
- SG Green Label products for cleaning consumables
- Digitisation of work processes

### WHAT THIS MEANS FOR YOU

Your event will have a lower carbon footprint without compromising quality or comfort.



## GREEN ENERGY ONSITE

- 16,508 solar panels with a capacity of 9.7MWp installed on our roof since December 2023
- Generates 12GWh annually
- Avoids the equivalent of 5,000 metric tons of carbon dioxide yearly

### WHAT THIS MEANS FOR YOU

Our team is able to collect and compare your event's electricity usage with our renewable energy data to help you determine your event's energy usage. You may request this carbon footprint report\* from your sales manager.

\*Available for B2B events



## RESPONSIBLE FOOD PRACTICES

- Farm-to-table practices via our onsite urban farm and herb gardens
- Close partnerships with F&B partners to adopt plant-based food and use local products
- Eco-friendly cutlery and packaging for our F&B products

### WHAT THIS MEANS FOR YOU

Sustainable dining is now easily accessible through our supply chain. More options, such as plant-based food, are available to you and your attendees.





## PLAY YOUR PART

Now that you know what's available at our venue, here's what you can do to operate your event sustainably.

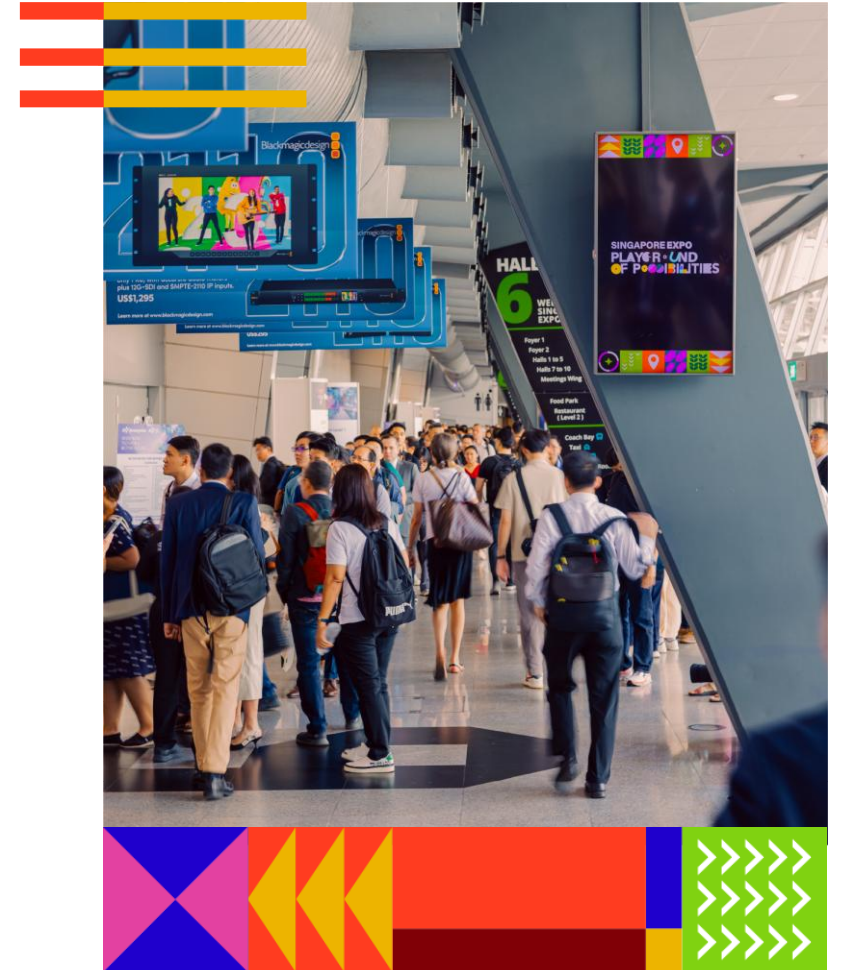
# Energy Saving

## Before the Event

- Encourage your attendees to take public transportation, carpool or rideshare to and from Singapore EXPO.

## During the Event

- Inform your attendees of the electric vehicle charging stations available in our car park. These stations are powered by renewable energy.
- Unplug chargers and devices when not in use to prevent phantom power consumption.
- Encourage logistics partners to switch off engines during loading and unloading.



PLAY YOUR PART

# Waste Management

## Before the Event

- Stop usage of Styrofoam products.
- Adopt a less-is-more mentality and approach.
- Work with suppliers that provide environmentally friendly booths and logistics to help exhibitors adopt sustainable practices, for example, minimise the use of carpets for events and use recycled carpets if they are required. Other options are to use reusable wood floor panels.
- For standard booth components, utilise modular off-the-shelf products that can be reused and reconfigured for the next event. For example, the use of tension fabric as an alternative to wall prints. This is to minimise single-use booths.
- Eliminate physical promotional materials as much as possible. Ideally, transition promotional materials to digital platforms instead, or ensure that any of these produced can be reused in the long term.
- Remind attendees to bring their own water bottles and refill them at our water dispensers instead of providing bottled water.
- Upcycling products such as lanyards or banners, and record the amount used.

## During the Event

- We have onsite waste separation and sorting facilities that can be provided as a solution to events.
- Educate and encourage your attendees to properly sort different waste streams (ie: recyclable vs non-recyclable).
- Set up food sorting areas to get event attendees to self-sort their food waste.
- Let's work together to increase landfill diversion and reduce waste generation for your event!





PLAY YOUR PART

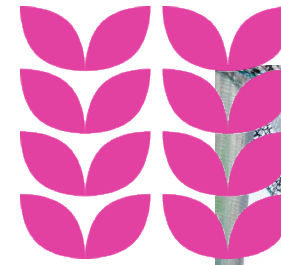
# Sustainable F&B

## Before the Event

- Understand the carbon footprint of different foods and champion sustainable ingredients when requesting event menus.
- Order only the amount of food needed for the number of attendees.

## A Quick Look at Sustainable Sourcing

- Prioritise locally sourced ingredients to minimise transport requirements
- Animal-based food, especially red meat, dairy, and farmed shrimp, are generally associated with the highest greenhouse gas emissions.
- Plant-based food, such as fruits and vegetables, whole grains, beans, peas, nuts, and lentils, generally use less energy, land and water, and have lower greenhouse gas intensities than animal-based food.
- Seafood products that carry either the MSC or ASC eco-labels are preferred.



PLAY YOUR PART

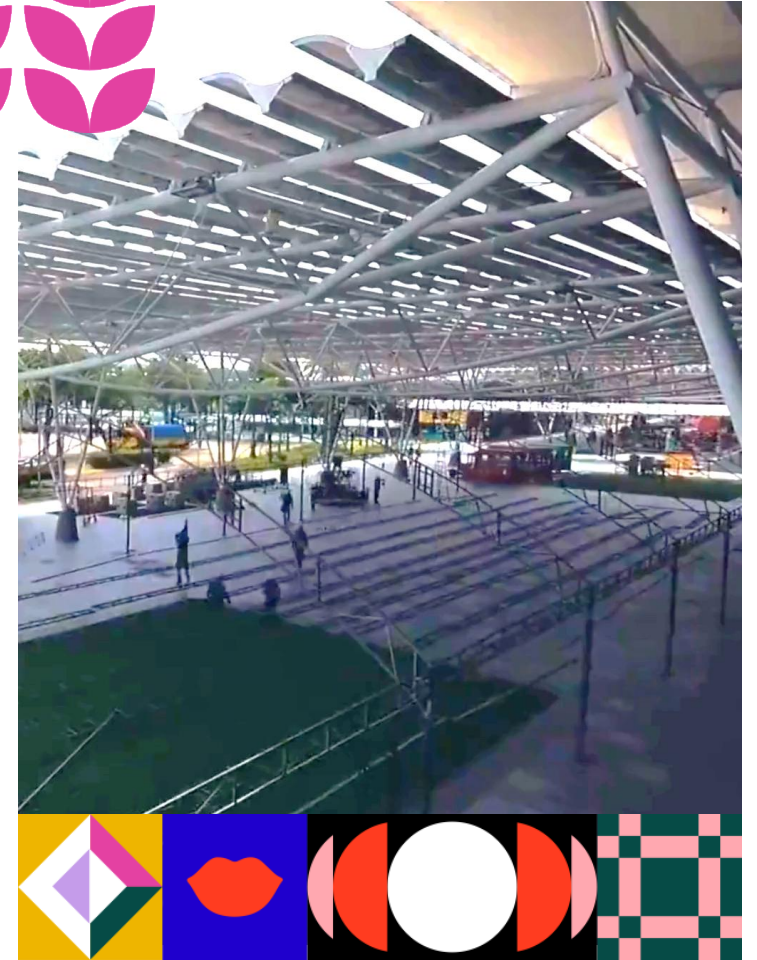
# Event Set Up Recommendations

## During Move-In and Move-Out

- Working with freight forwarders & logistics companies:
  - Propose minimal and efficient packaging to reduce packaging waste during shipment.
  - During unloading and loading, Singapore EXPO has a no-idling policy at the loading bay to minimise generation of emissions from waiting trucks and to improve the air quality at the work environment.
  - Provide exhibitors with a pallet take back program and/or work with Singapore EXPO to designate a location where pallets can be temporarily stored to be reused when the event ends.
  - Transition to electric-powered equipment (e.g. forklifts, buggies, mobile elevated work platforms).
  - For events that require additional diesel generators, to consider zero carbon emission generators such as hydrogen fuel cells or battery storage solutions.

## During Entire Event Duration

- Recommendation to turn off engines of vehicles when not in use during unloading/loading to minimise generation of carbon emissions and improve the air quality of the immediate working area.
- Ensure that fair labour practices and proper workplace safety precautions are adhered to during the event duration.





# Your Checklist to Hosting a Sustainable Event



## Waste Management

- Use environmentally friendly booths
- Replace physical marketing collaterals with digital collaterals
- Reduce, reuse and recycle at every opportunity, and encourage attendees to do the same



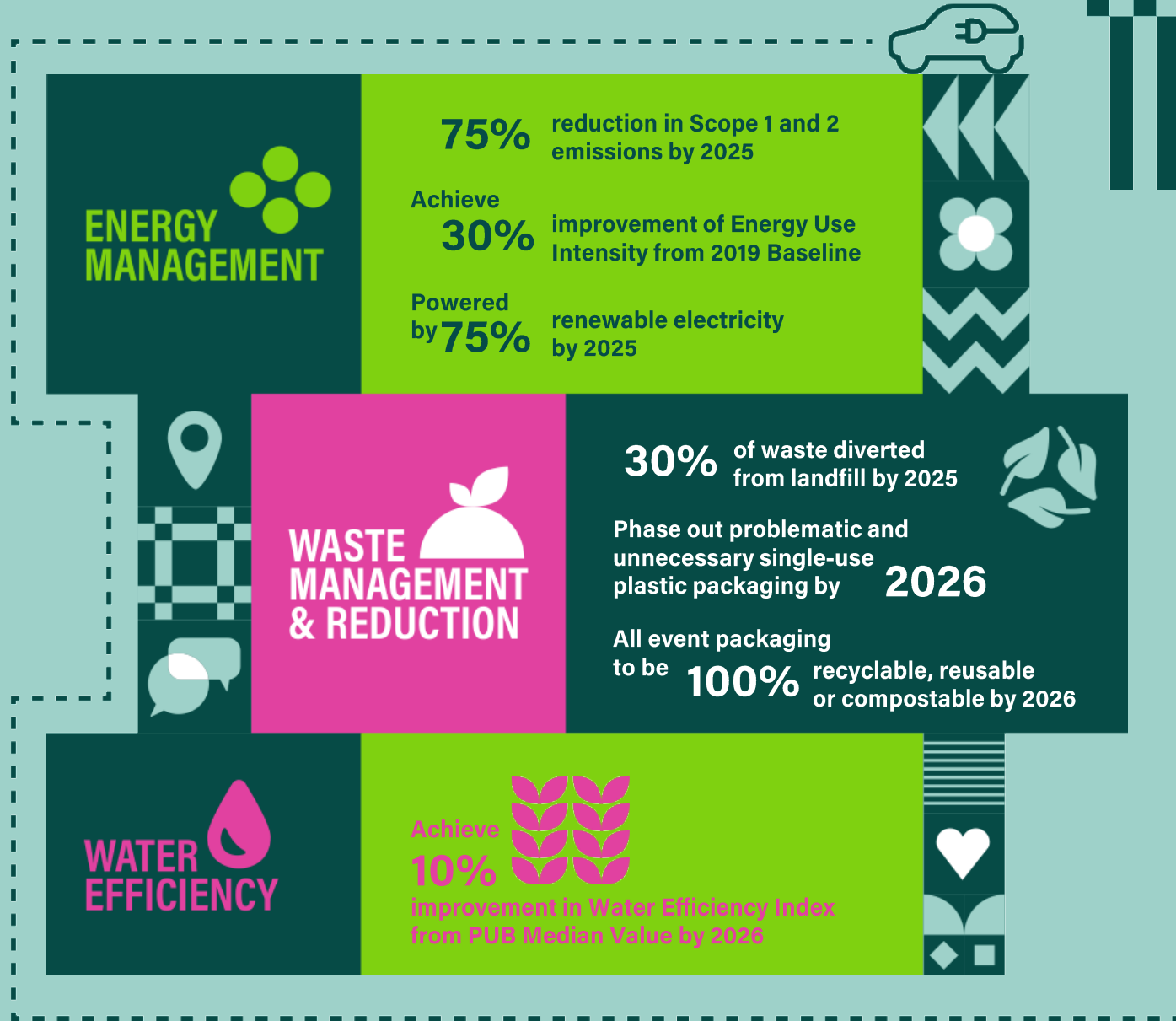
## Energy Saving

- Take public transportation, carpool or ride-share
- Use our electric vehicle charging stations
- Unplug chargers and devices when not in use



## Sustainable F&B

- Choose foods that are lower in greenhouse gas emissions
- Prioritise locally-sourced ingredients



# Our Sustainability Roadmap







# Our Green Journey

It's been over 10 years since we embarked on this journey, and we are proud to be recognised for our efforts.

## 2012

- BCA Green Mark Platinum Award for meetings and conventions wing



## 2017

- ISO 14001: 2015 Environmental Management System
- PUB Water Efficient Building Base



## 2023

- BCA Green Mark Platinum Award for 10 exhibition halls



## 2019

- SEC-STATS Asia Pacific Singapore Environmental Achievement Award (Services)
- BCA Green Mark Gold Plus Award for 10 exhibition halls



## 2025

- AIPC Quality Standards Certification – Gold
- BCA Green Mark Platinum Super Low Energy Award for 10 exhibition halls
- EarthCheck Silver Certified
- EcoVadis Sustainable Certification - Bronze
- Events Industry Council Sustainable Event Standards – Gold
- ISO 14001
- SACEOS MICE Sustainability Certification (Platinum)
- Sustainability Initiative of the Year Award



SUSTAINABILITY FRAMEWORK

# Our Commitment

Singapore EXPO consistently upholds high sustainability standards and goes above and beyond for our clients.



### Certificates & Awards



SACEOS MICE Sustainability (Platinum) Certification



BCA Green Mark Platinum Super Low Energy Certification



ISO14001 - Environmental Management System



EcoVadis Sustainable Certification (Bronze)



Events Industry Council Sustainable Event Standards (Gold)



AIPC Quality Standards Certification (Gold)



EarthCheck Silver Certified 2025



Company of Good - 3 Hearts



Sustainability Initiative of The Year Award 2024



Singapore Apex Corporate Sustainability Awards 2025 (Sustainable Business)



### Memberships & Pledges



LowCarbonSG Participant




Global Sustainable Tourism Council (GSTC) Member



Net Zero Carbon Events Pledge







# Host Your Next Event With Us

Have any questions?  
Reach out to us and we'll  
take it from there.

---

✉ [sustainability@constellar.co](mailto:sustainability@constellar.co)

🌐 <https://www.singaporeexpo.com.sg>

# SINGAPORE EXPO

To find out how Singapore EXPO can transform your next event, please feel free to reach out or scan the QR code to submit your interest and we will be in touch with you.



📍 1 Expo Dr, Singapore 486150 ☎️ +65 6403 2160

🌐 [singaporeexpo.com.sg](https://singaporeexpo.com.sg) ✉️ [sales@singaporeexpo.com.sg](mailto:sales@singaporeexpo.com.sg)

🌐 [singaporeexpo](#)

**Playground** of Possibilities

